

05 Aesthetics Tour Conclusion

Sunday, December 20, 2015 8:29 PM

Today:

Comment logistics vote
Blog Post Assignment
Aesthetics Tour Conclusion
Meet Your Team
What is Design Process? Small group, then class discussion (Monday)

CLICKER Frequency: DB

Minimum substantive comments you will make (and get).

- 49% → a) 2
43% b) 3
c) 4
d) 5
e) 6

How to decide which posts in the current assignment to comment on? **These are minimum guidelines**

- 8 1) You must offer comments to 2 of your teammates. The rest of your comments can be on any post of the current assignment.
- 16 2) You must offer comments to 1 of your teammates. The rest of your comments can be on any posts of the current assignment.
- 1 3) Your first two comments must be on posts that have 0 or 1 comment already. The rest can be on any post
- 5 4) ~~You must offer comments to 2 of your teammates.~~ You will be assigned one other team each week on a rotation, to make ~~extra~~ additional comments
- 4 5) Each week you must comment on somebody new (that you have not yet commented on), plus 2 others of your choice.
- 6) Commit to a project/student, until all have 2 committed, change for next project
- 12 7) Make 3 quality comments on any posts
- 8) ~~Allow only 3 comments per post.~~

When will comments be due? ④ midnight

- 5% a) 1 day after post is due?
23% b) 2 days after post is due?
21% c) 3 days after post is due?
7% d) 4 days after post is due?
44% e) 5 days after post is due? =

Schmoly

Next Post Assignment:

What is your process for the Upcycle assignment? Where are you in the process now?

Due date: up to Wednesday Jan 27

- 12% A) M
5% B) T
44% C) W
D

Generic Weekly Due Date

Time

44%		
19%	D)	R
16%	E)	F

Time

19% A) 12 noon

13% B) 5 pm

63% C) Midnight

Aesthetics Tour

All images taken from the first-page Google image search results.

Please volunteer local exemplars.

Thanks Laura

Consider an additional blog post if an additional aesthetic occurs to you

Art Deco

Art Deco is an elegant style of decorative **art**, design and architecture which began as a Modernist reaction against the **Art Nouveau** style. It is characterized by the use of angular, symmetrical geometric forms.

From <<https://www.google.com/search?q=art+deco&ie=utf-8&oe=utf-8>>

1920s, 1930s and 1940s before its popularity waned after [World War II](#).

Brown Palace, downtown Denver = good local exemplar

From <https://en.wikipedia.org/wiki/Art_Deco>



Art Nouveau

a style of decorative art, architecture, and design prominent in western Europe and the US from about 1890 until World War I and characterized by intricate linear designs and flowing curves based on natural forms.

From <<https://www.google.com/search?q=art+nouveau&ie=utf-8&oe=utf-8>>



Whiplash Curve



Maxfield Parrish



(July 25, 1870 – March 30, 1966) was an American painter and [illustrator](#) active in the first half of the 20th century. He is known for his distinctive saturated hues and idealized neo-classical imagery.

From <https://en.wikipedia.org/wiki/Maxfield_Parrish>



Charles Rennie Mackintosh (7 June 1868 – 10 December 1928) was a Scottish architect, designer, water colourist and artist. He was a designer in the [Post-Impressionist](#) movement and also the main representative of [Art Nouveau](#) in the United Kingdom. He had considerable influence on European design.

From <https://en.wikipedia.org/wiki/Charles_Rennie_Mackintosh>

Arts and Crafts Movement

- 1850-1900 Pushback against Industrial Age. Handcrafted wood furniture



- **William Morris**





-
- **Art deco:** Popular in the 1920s and 1930s; zigzags, sharp angles and stepped designs; influenced by jazz and skyscrapers. Think *The Great Gatsby*.
- **Art nouveau:** Popular in the late 19th century; whiplash curves; nature-inspired designs; finely crafted metal and wood. Think Rivendell or signs for the Paris Metro.
- **Arts and Crafts:** Popular in the mid-19th century; handcrafted and artisan-made wood, pottery, tile and stained glass; nature motifs done simply; rectilinear forms. Think William Morris and bungalow style.

From <<http://www.houzz.com/ideabooks/30718392/list/art-deco-art-nouveau-arts-and-crafts-whats-the-difference>>

Retro

Retro style is style that is consciously derivative or imitative of trends, music, modes, fashions, or attitudes of the recent past, typically 15–20 years old.

From <https://en.wikipedia.org/wiki/Retro_style>

More like past 60 - 70 years

Washi paper

Japanese traditional art paper; texture and prints, for origami etc.



Heavy metal



Surf music



NOT the Beach Boys

Dick Dale, founder of genre, much 'wet' spring reverb, bouzouki stylings, from Greek 1920's Rembetika music, surf beat = syrtó rhythm
i.e. Miserlou

Lolita fashion

(ロリータ・ファッション *Rorīta fasshon*²) is a fashion [subculture](#) originating in Japan that is based on [Victorian](#) and [Edwardian](#) clothing, but the style has expanded greatly beyond Japan

From <https://en.wikipedia.org/wiki/Lolita_fashion>



Glam



Preppie, golf



Gucci driving moccasins



Trucker culture



Las Vegas Casinos



Disney princesses



Mariachi



Black velvet Elvis



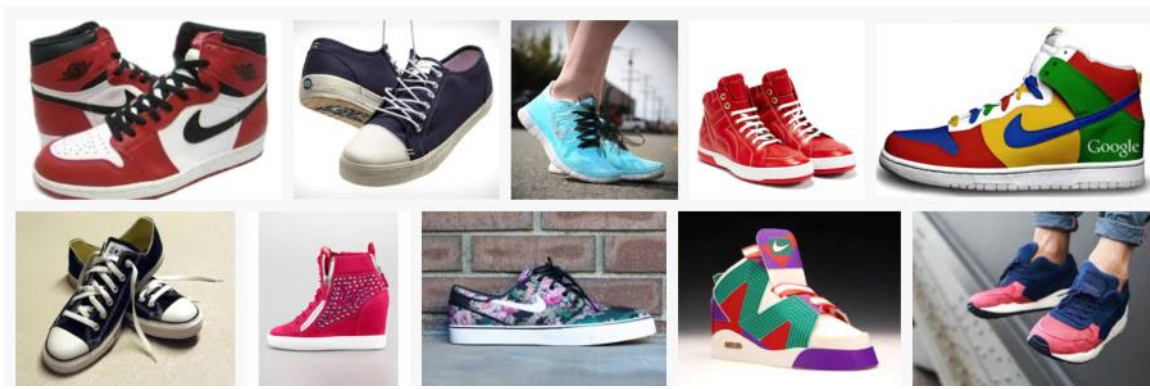
Frank Sinatra/ rat pack



Sopranos/Mob culture



Sneakers





Idea Forge Info sheet 1.12.16

