

06 ITLL,Blog specs, teams

Friday, January 29, 2021 1:03 PM

Today

Lab and Fab: ITLL
Blog and critique specs
Meet your team/pod

Admin

Please communicate with me and Eileen on Slack. Email is not as good, your message can get buried.

<https://www.aesdes.org/2023/01/17/blog-and-comments-policies/>

Teams

Small teams (2-4 students) are for class discussions. Pods (12 students, 3-4 teams) are for formal critiques (Upcycle, Design Preview, Final Project)

Today, meet your team. Exchange contact info, and talk about your upcycle project.

If you want, make a channel in slack for your team, and everybody join it. Make the channel name the same as your team name, i.e. Pod01Team04.

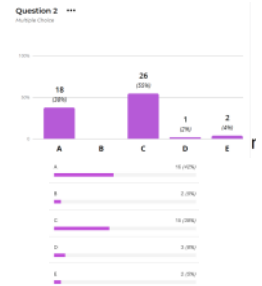
Join your pod's slack channel.

1. That was fine, I met everybody on my team
2. Communication was a problem
3. My team had missing people
4. I was alone in person
5. I was alone on zoom

ITLL introduction is below

[Fabricated](#)

Brett Foxwell. Possible guest lecturer





The ITLP

itlp.colorado.edu



INTEGRATED
TEACHING & LEARNING
Program and Laboratory

Presentation Contents



Laboratory & People



Teaching & Learning



Equipment & Software



Your First Visit Checklist



INTEGRATED
TEACHING & LEARNING
Program and Laboratory



Laboratory & People



Contents

- Our Team
- Building Access
- Spaces & Centers



INTEGRATED
TEACHING & LEARNING
Program and Laboratory



Our Team

Engineering Education Operations Team

See our entire
team on our
[About Us page](#)



Click on a face
to learn more!



Lauren



Viri



Rachel



Natasha



Jonah



Sa'Von



Carolyn



Humsini



Mark



Jenn



ITLP-gg-EngineeringSupport@Colorado.edu



Our Team - Lauren Darling

Senior Engineering Projects Consultant

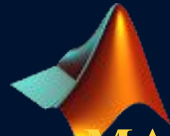
 **Solderin**
g



**PCB Design and
Manufacturing**

Circuits

Arduino



MATLAB Expe
rt

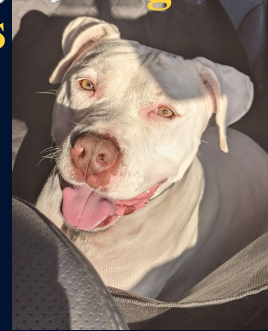


Space Enthusiast



(CU)

Dog Lover



Baker

[Click here to return
to our team collage](#)



Our Team - Humsini Acharya

Engineering Projects Consultant

**3D
Printing**



Humsini is commonly
called an “Engineer”

**3D
Printing**

**Material
s Testing**

**3D
Printing**

**3D
Printing**

**3D
Printing**

**3D
Printing**

**3D
Printing**

[Click here to return
to our team collage](#)



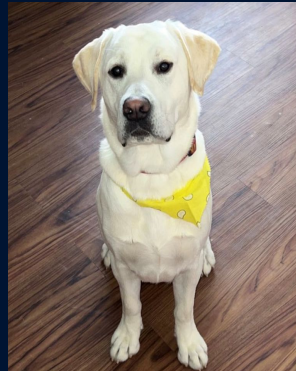
Our Team - Viri Varela

Engineering Projects Consultant

Viri is commonly called an “Engineer”



Dog Mom



Travel



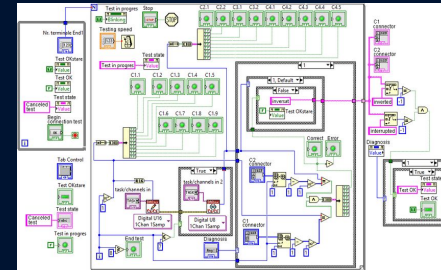
Sensors



Data Acquisition



LabView



**INTEGRATED
TEACHING & LEARNING**
Program and Laboratory



Our Team - Rachel Sharpe

Senior Engineering Projects Consultant Faculty Liaison



Material Testing



Hands-On Experiments



Startup Enthusiast!



Our Team - Natasha Ouellette

Engineering Project Consultant



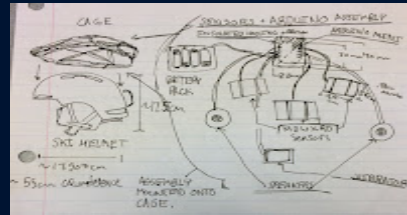
CAD Modeling



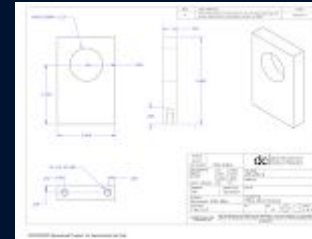
Laser Cutting



Travel Enthusias



Prototyping



**Machining
Drawings**

[Click here to return to our team collage](#)



Our Team - Jonah Spicher

Engineering Projects Consultant



Jonah is commonly called an “Engineer”

[Click here to return
to our team collage](#)



Our Team - Mark Eaton

Manufacturing Center Manager



Mark is commonly called a “Shop Manager”

Carpentry

**Green-Thumb
Gardener**

Machining

Avid Fisherman

[Click here to return
to our team collage](#)



Our Team - Jenn Boggs

Manufacturing Center Specialist



Jenn is commonly called a “Manufacturing Center Specialist”

CNC Mills

Machining

CAD / CAM

[Click here to return
to our team collage](#)



Our Team

Engineering Support Students



Check out our SOE

Opportunities



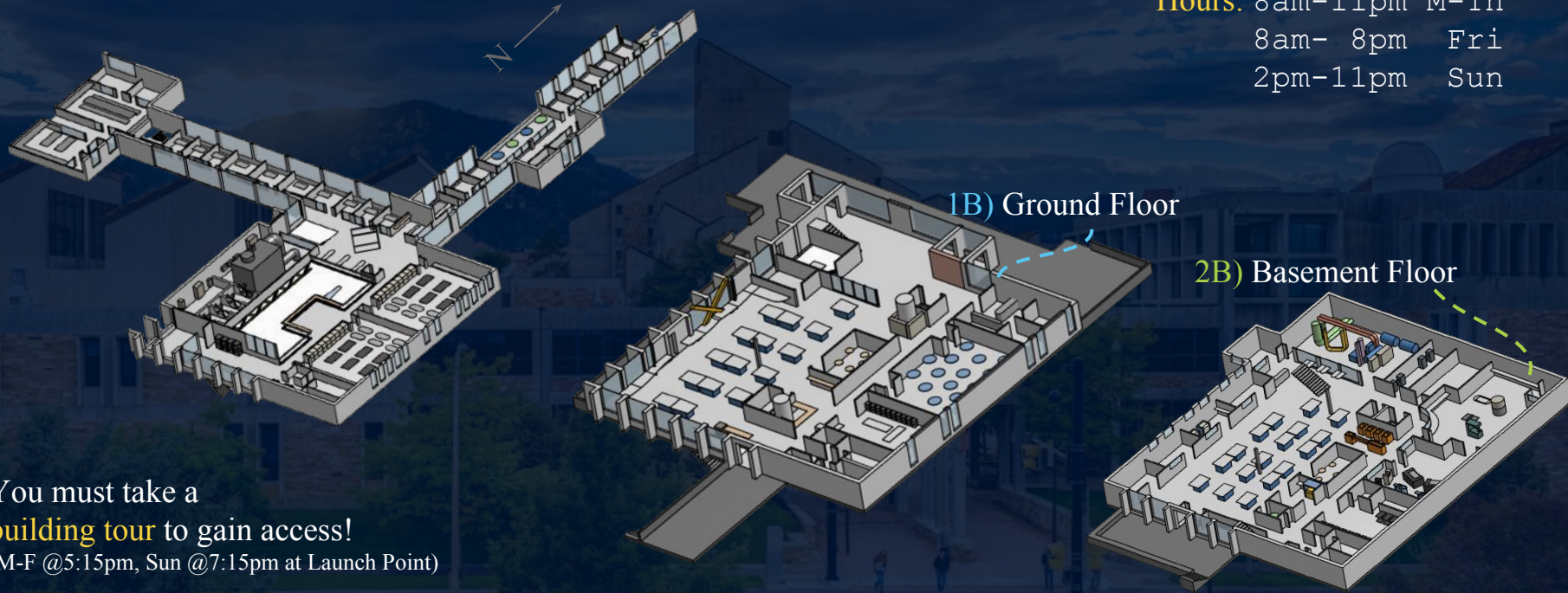
**INTEGRATED
TEACHING & LEARNING**
Program and Laboratory



The Laboratory Building

3 Floors Of Creativity!

Hours: 8am-11pm M-Th
8am- 8pm Fri
2pm-11pm Sun



You must take a
building tour to gain access!
(M-F @5:15pm, Sun @7:15pm at Launch Point)



The Laboratory Building

The Project Depot & Open Work Areas

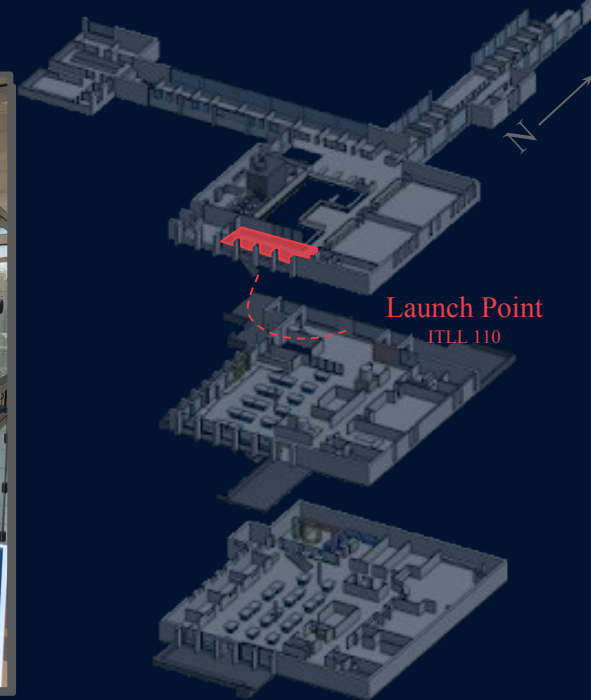
The Launch Point ...

Here, you'll find:

- An ESS desk, staffed by a helpful ES Student!
- Great places to work and make a mess
- The Wall of Awesome
- Mini Laser Machines

1st Rule of the LP:

Leave it nicer than you found it!



The Laboratory Building

Launch Point & the Consumable Materials Closet

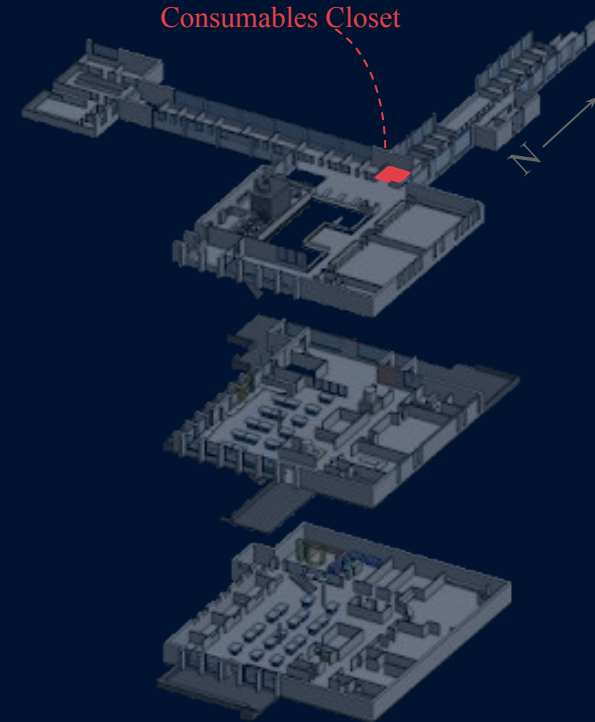
...and Consumable Materials Closet

Here, you'll find:

- Consumables
- Tape
- Glue
- Hardware
- Electronics
- All sorts of stuff for free!

1st Rule of the CMC:

TAKE ANYTHING! If you don't break it, re-donated it



The Laboratory Building

Manufacturing Center (Wood & Metal Shops)

The Wood Shop...

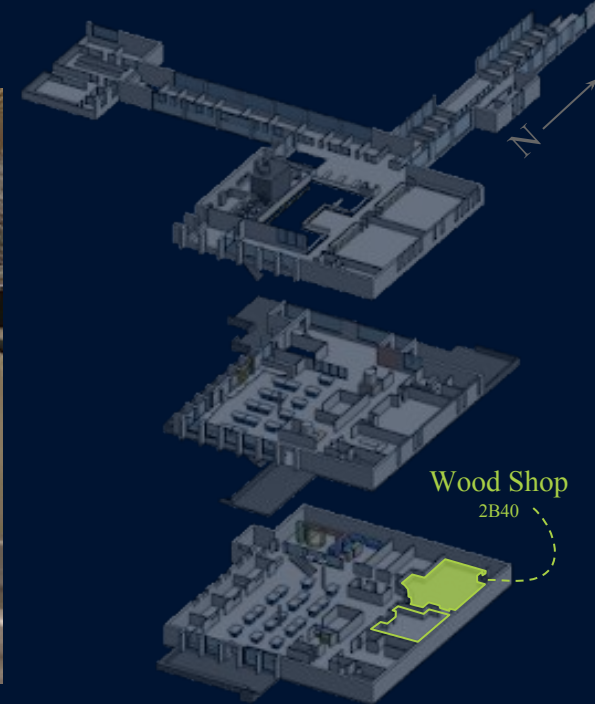
Here, you'll find:

- Common woodworking machines and tools
- Support for engineering project basics

Includes the office of:



Mark
Eaton



The Laboratory Building

Manufacturing Center (Wood & Metal Shops)

...and The Metal Shop

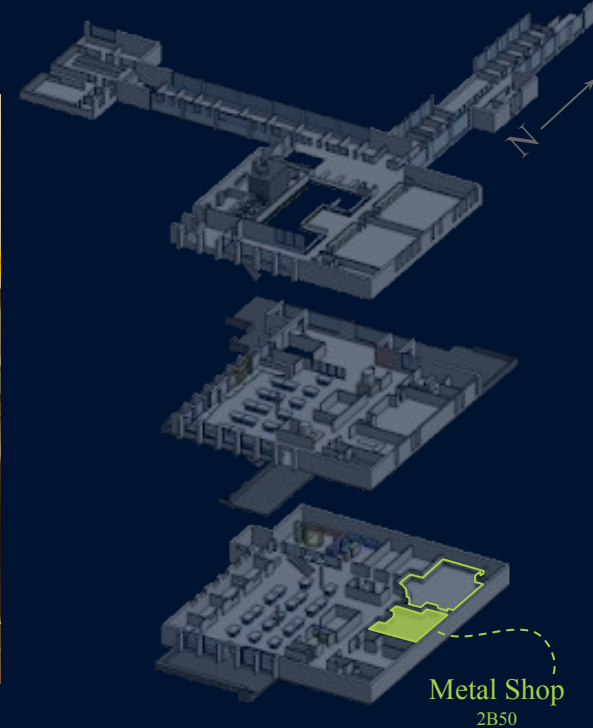
Here, you'll find:

- CNC machines
- Manual Machines
- Fabrication for metal, plastic, and composites

Includes the office of:



Jenn
Boggs



The Laboratory Building

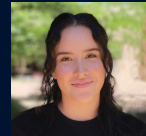
Electronics Center & Electronics Fabrication Center

The Electronics Center...

Here, you'll find:

- Soldering irons
- Sensors and DAQs
- Desktop Testing Equipment
- Free Parts

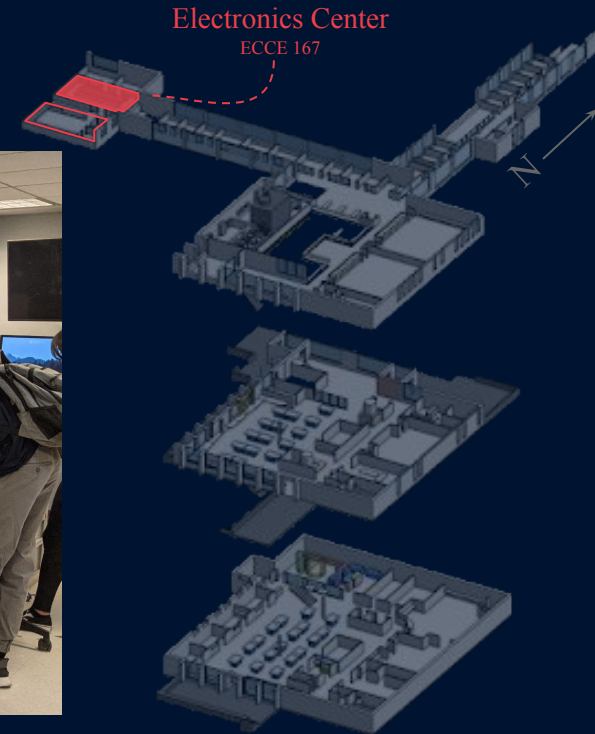
Includes the offices of:



Viri
Varela



Jonah
Spicher



**INTEGRATED
TEACHING & LEARNING**
Program and Laboratory



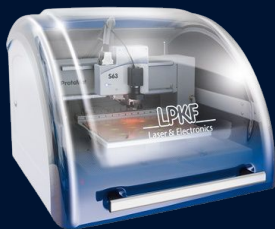
The Laboratory Building

Electronics Center & Electronics Fabrication Center

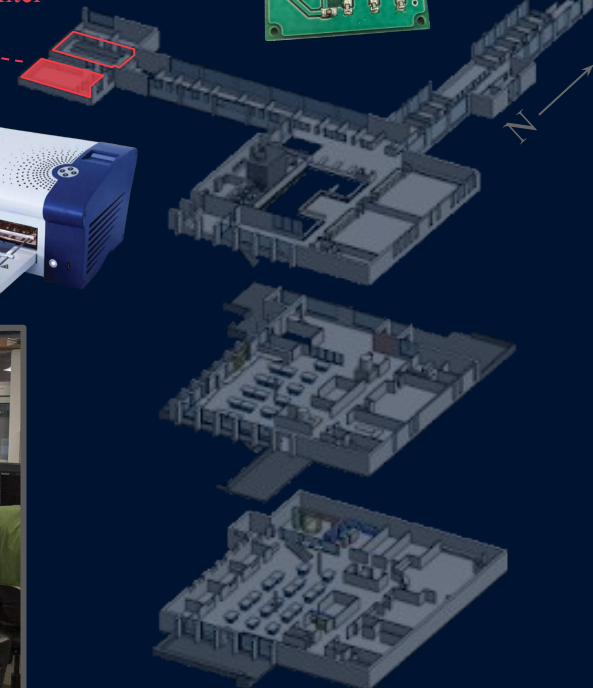
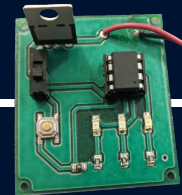
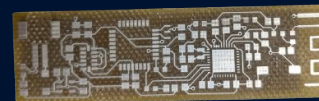
...and The Electronics Fabrication Center

Here, you'll find:

- Soldering irons
- PCB Equipment
- Inspection Scope
- Rework Equipment
- Arduino, Particle, Raspberry Pi Kits



Electronics Fabrication Center
ECCE 168



Includes the offices of:



Lauren
Darling



IT



INTEGRATED
TEACHING & LEARNING
Program and Laboratory



The Laboratory Building

The Project Depot & Open Work Areas

Student Storage...

Here, you'll find:

- Tools
- Hand tools
- Specialty equipment for checkout
- Storage for projects (limited)
- Lots of workspace

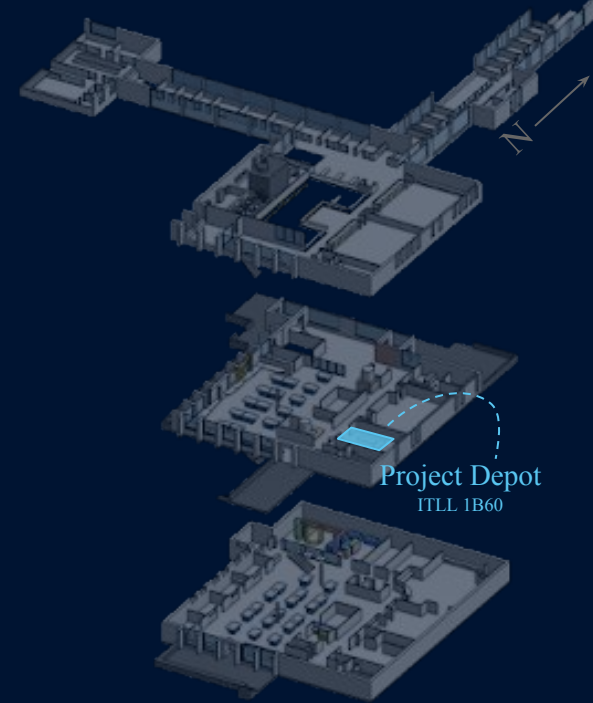
Includes the offices of:



Natasha
Ouellette



Humsini
Acharya



**INTEGRATED
TEACHING & LEARNING**
Program and Laboratory



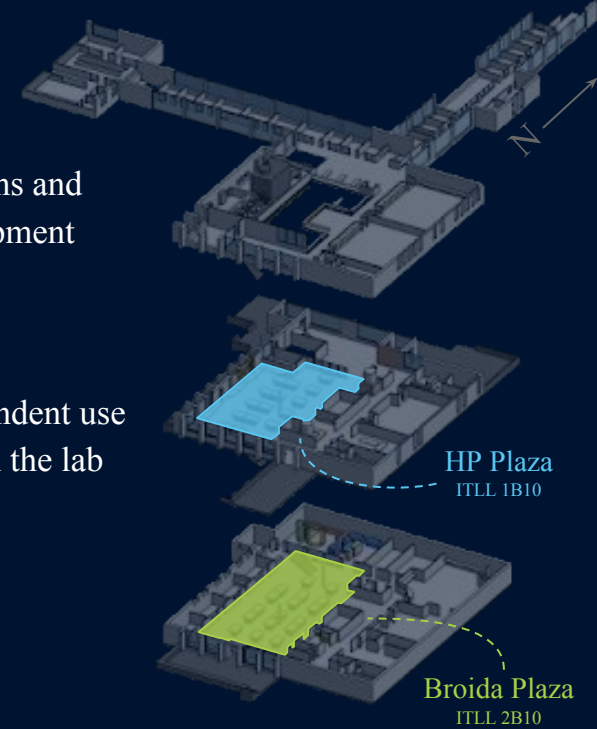
The Laboratory Building

Lab Plazas



Computer Workstations and
Desktop Testing equipment

*Available for independent use
when no classes are in the lab
plazas.

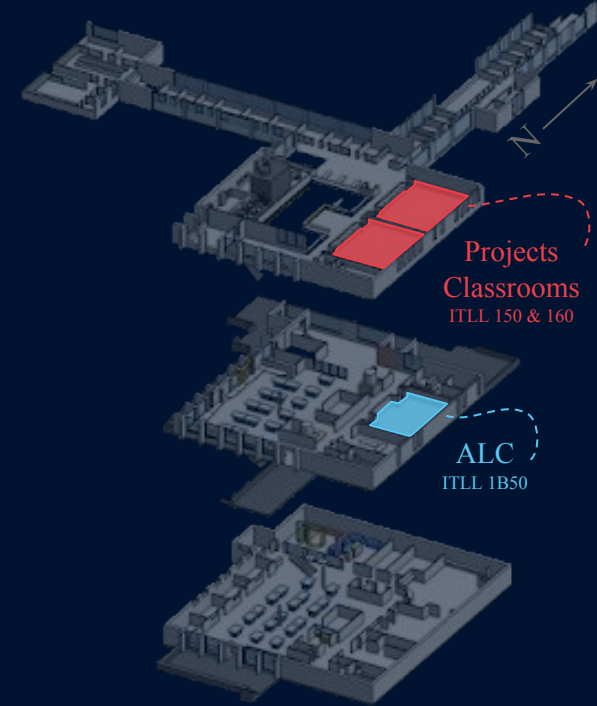


**INTEGRATED
TEACHING & LEARNING**
Program and Laboratory



The Laboratory Building

Classrooms (150 / 160 & ALC)



**INTEGRATED
TEACHING & LEARNING**
Program and Laboratory



Equipment & Software



Contents

- Manufacturing Tools
- Sensors & DAQs
- Software

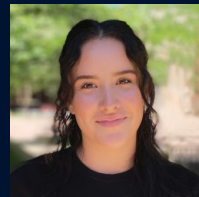


INTEGRATED
TEACHING & LEARNING
Program and Laboratory



Equipment

Sensors & DAQs for Checkout



Viri

Equipment & Tools:

- Sensors
- Instrumentation
- Data Acquisition Devices

Examples:

- Labview
- Vernier
- Embedded devices
- Thermometers
- Strain Gauges
- Accelerometers
- Load Cells
- The list goes on...

Go to itll.link/checkout to see all of our sensors available for

checkout!



INTEGRATED
TEACHING & LEARNING
Program and Laboratory



Equipment

Materials Testing



MTS



Humsini



Rachel

Equipment & Tools:

- MTS machines
- Torsion machines
- Vibration equipment

Examples:

- Tension
- Compression
- Flexure
- Torsion
- Vibration



INTEGRATED
TEACHING & LEARNING
Program and Laboratory



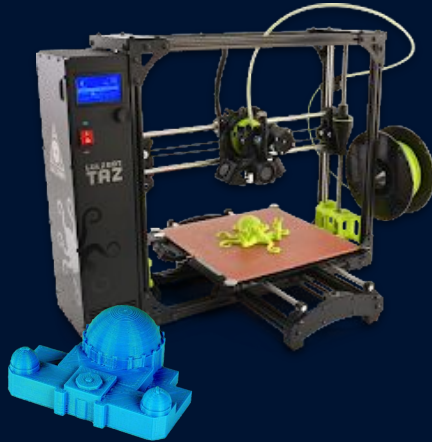
Equipment

3D Printers



Access
Required

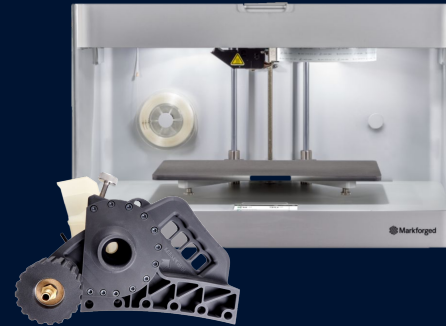
Lulzbot
Self-Service



Objet
Staff-Run



Markforged
Staff-Run



Humsini

Equipment and Tools:

- Self-Service:
10x Lulzbots
- Staff-Run:
1x Markforged Onyx Pro
1x Objet Pro 30

Cost for Material:

- For Self-Service Printers:
\$25/1kg spool,
purchase at Launch
Point
- For Staff Run Printers:
Pay per print through
fab request system



Equipment

Laser Cutters/Engravers Legends

 Access
Required



Natasha

Equipment and Tools:

- 2x Epilog Legend (ITLL 2B05)
- 2x Epilog Mini (ITLL 110)

Material

- Legend Machines: 24"x36"
- Mini Machines: 18"x24"
- Up to $\frac{3}{8}$ " thick
- Purchase acrylic at:
 - McGuckin Hardware
 - Colorado Plastics
 - Home Depot
- Cardboard too!
- Anything else? Ask us first!

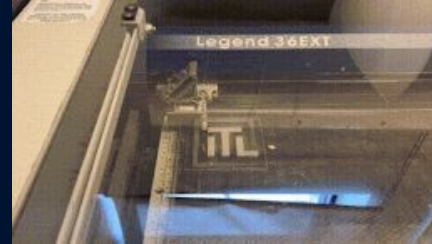


Equipment

Laser Cutters/Engravers Minis & Legends



Access
Required



Natasha

Equipment and Tools:

- 3x EpiLog Fusion Pro (ITL 2B05)
- 2x EpiLog Mini (ITL Launch Point)

Material

- Legend Machines: 24"x36"
- Mini Machines: 18"x24"
- Up to $\frac{3}{8}$ " thick
- Purchase acrylic at:
 - McGuckin Hardware
 - Colorado Plastics
 - Home Depot
- Cardboard too!
- Anything else? Ask us first!

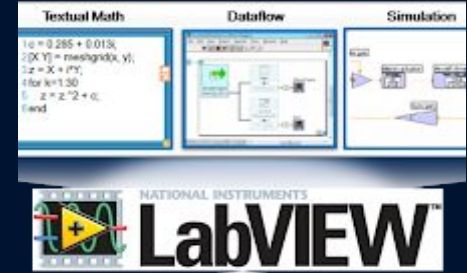


INTEGRATED
TEACHING & LEARNING
Program and Laboratory



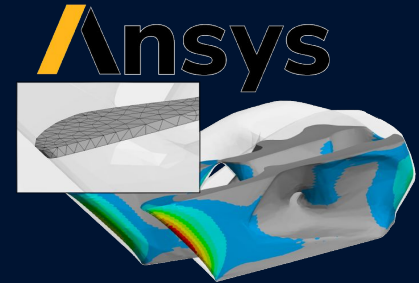
Software

Licenses & Cloud-Computing



CEAS Cloud
Computing Solution

ceas.link/cloudcomputing



Teaching & Learning



Contents

- Workshops
- Experiments



INTEGRATED
TEACHING & LEARNING
Program and Laboratory



Learning

Skill-Building Workshops



Teaching

K-12 Outreach

Looking for a cool campus job?

Want to make a difference for kids?



**Apply for an ITLP position on our
Pre-College Engineering Support Team!**

K-12 program highlights:

- Create online engineering skills modules
- Provide hybrid in-school engineering support
- Lead after school engineering clubs
- Develop summer engineering design camps & more!



Jennifer



Rebecca



Your First Visit Checklist



Contents

- Take the Tour for Access!
- Talk to an Engineering Support Student (navy vests!)
- Meet an ITLP Engineer



**Have questions,
but don't know who you are looking for?**

Contacts Us



Backup / Retired Slides

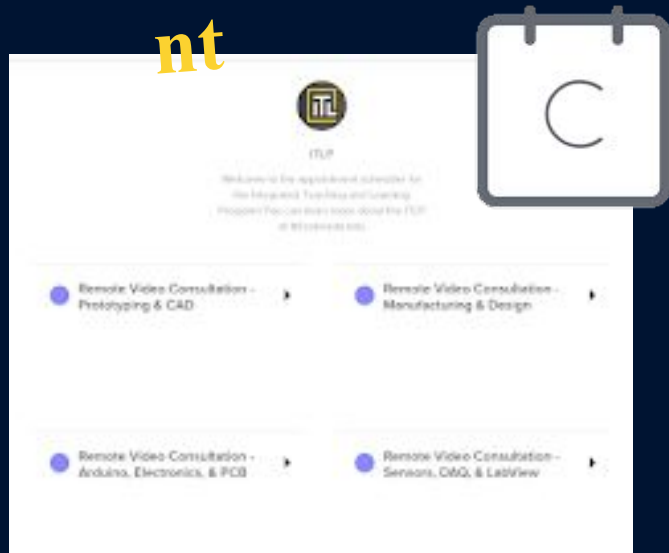
Be sure to hide these by
selecting “Skip” slide



Our Team

Getting In Contact With Us

itll.link/appointment



itll.link/livehelp

