

# Hajime Kinoko

Designer presentation by Bekah Smith

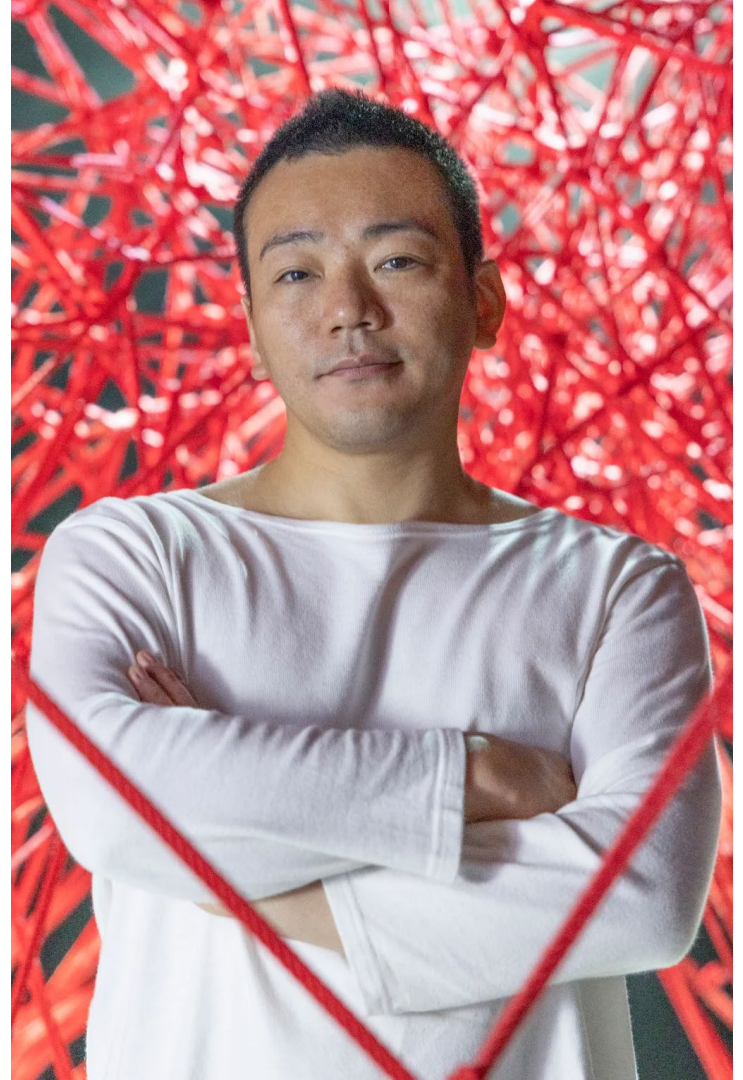
Kinbaku began as a way to restrain criminals in Japan,  
later became an erotic artform in the late 1800's

Now a form known as shibari follows this

“aesthetic practice that transforms and sculpts the  
contours of the body with rope”

Kinoko took up rope for the first time in 2001, and learned  
from greats Akechi Denki and Nawashi Kanna.

“His innovative works and sense of style have brought a  
breath of fresh air into the world of kinbaku”











# Signatures of Kinoko's work

## Red

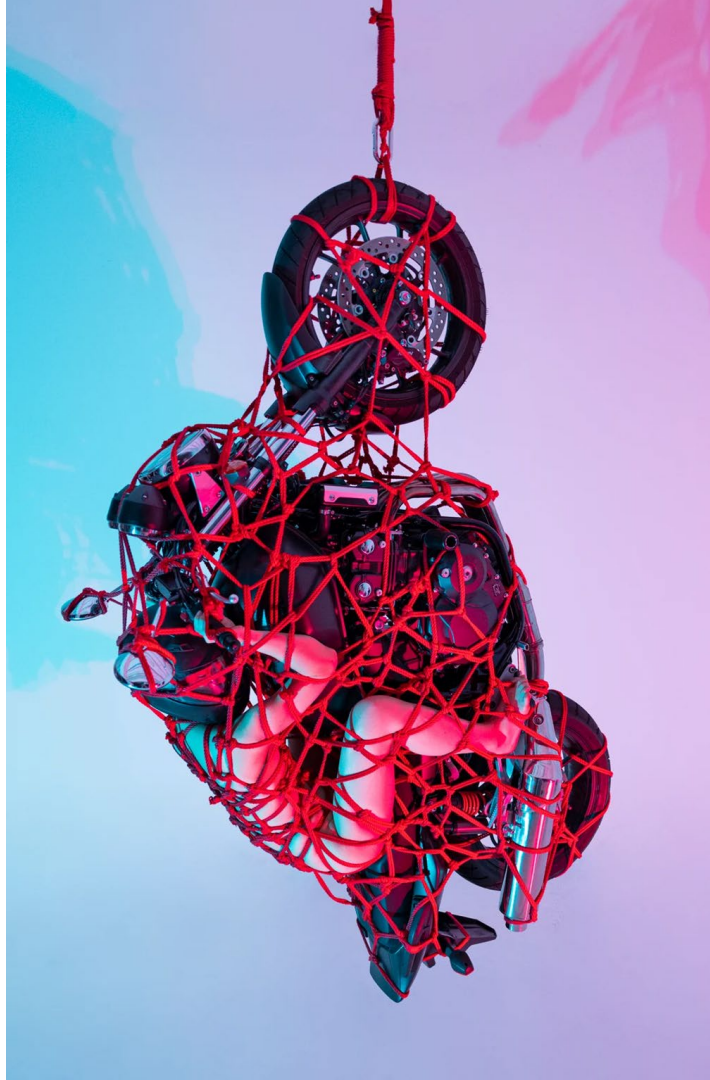
“For Kinoko, red is a color symbolic of connection...” “...nature, peers, DNA, the future and connections between hearts.”

“I use red rope to emphasize ‘connections’ such as blood or fate, which is expressed in the Japanese language as ‘the red string of fate.’”

## Scale

## Contrast

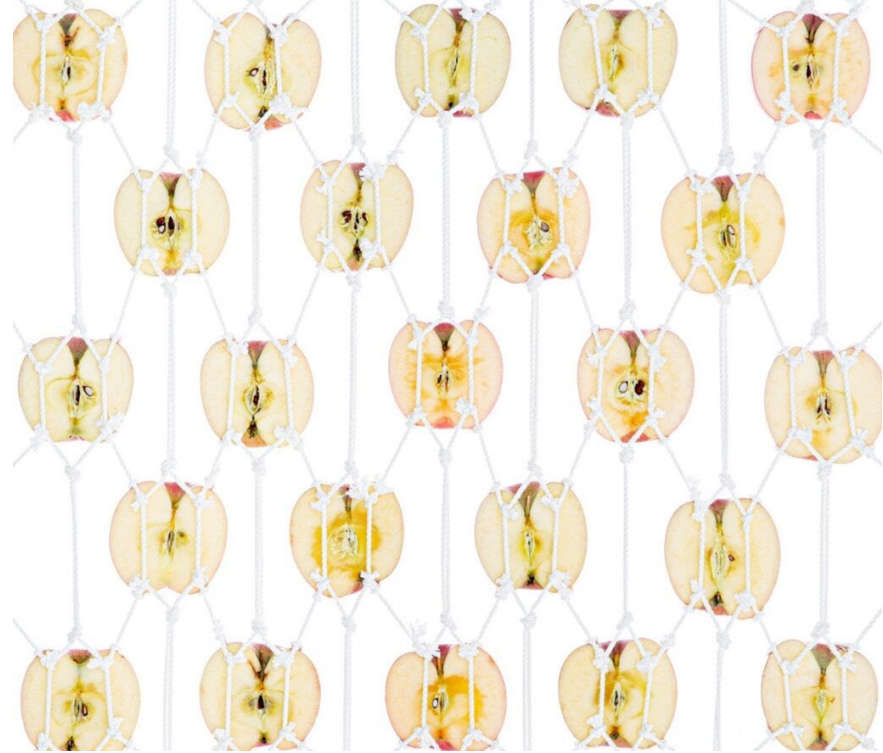
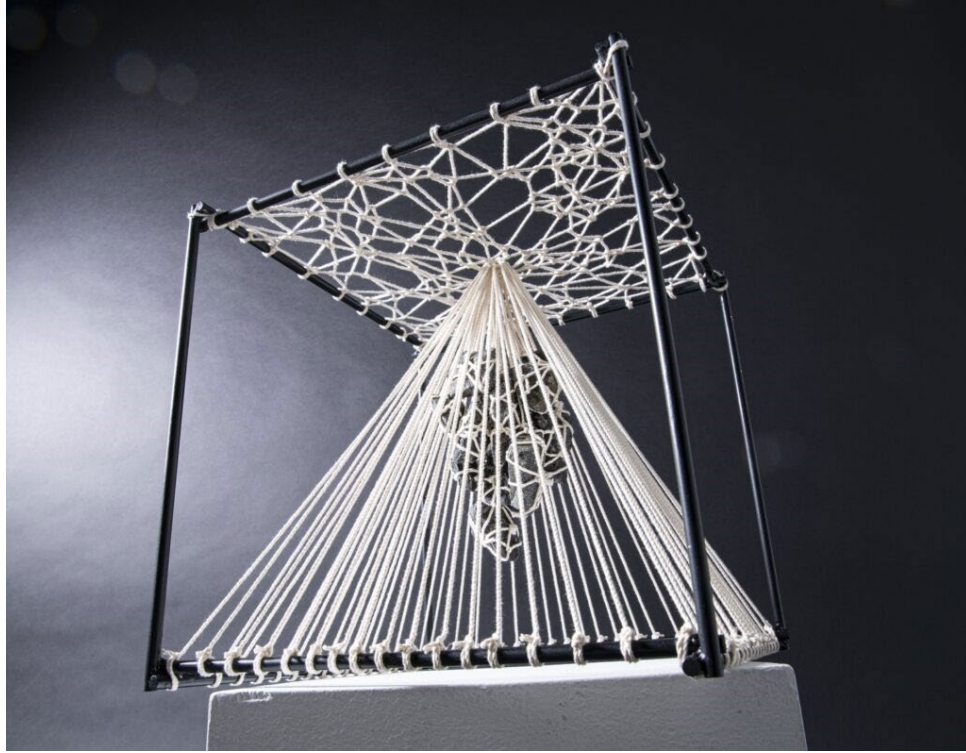




What are you? A  
fashion designer,  
artist, performer?

“I am actually closer to an artisan, like a chef,”  
Kinoko says, “and my models and ropes are like  
ingredients. I match whatever works best for the  
desired art result.”







# Where you can find Kinoko's work

Museum exhibits and live events in Tokyo, London, New York City, Oakland

Burning Man installation

NFT's showing ropework in AR



“What do you want people to take away from your work?

Power.”

# References

<https://www.mariesauvage.com/about>

<https://www.otaquest.com/hajime-kinoko-interview/>

<http://officemagazine.net/kinbaku-museum-sex>

[https://www.tokyoweekender.com/art\\_and\\_culture/hajime-kinoko-shibari/](https://www.tokyoweekender.com/art_and_culture/hajime-kinoko-shibari/)

Thank you