

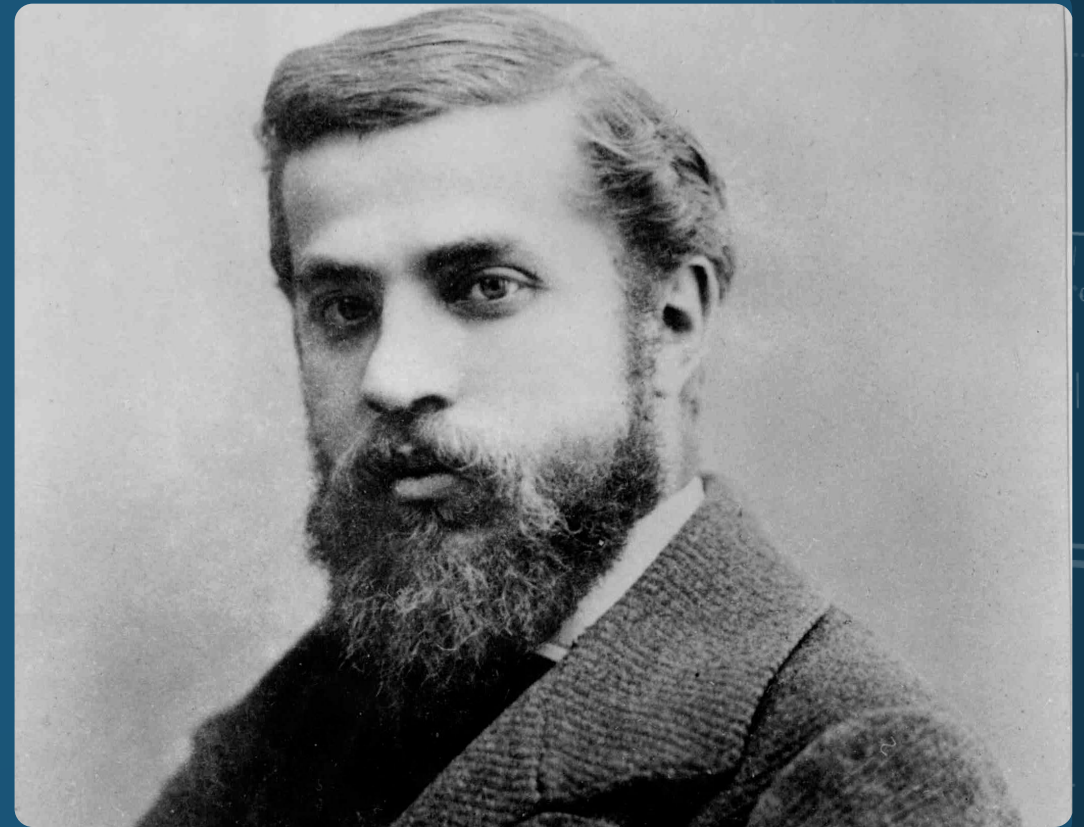


# ANTONI GAUDÍ I CORNET

PERE ROQUET

# BIOGRAPHY

- Antoni Plàcid Guillem Gaudí i Cornet
- Born on June 25th, 1852 in Reus, Spain
- Extremely religious and devoted to architecture, also never married
- Graduated in Architecture in Barcelona in 1878
- Known for big figure in Catalan Modernism and Art Nouveau
- Died in June 10th, 1926 in Barcelona after being struck by a city trolley car

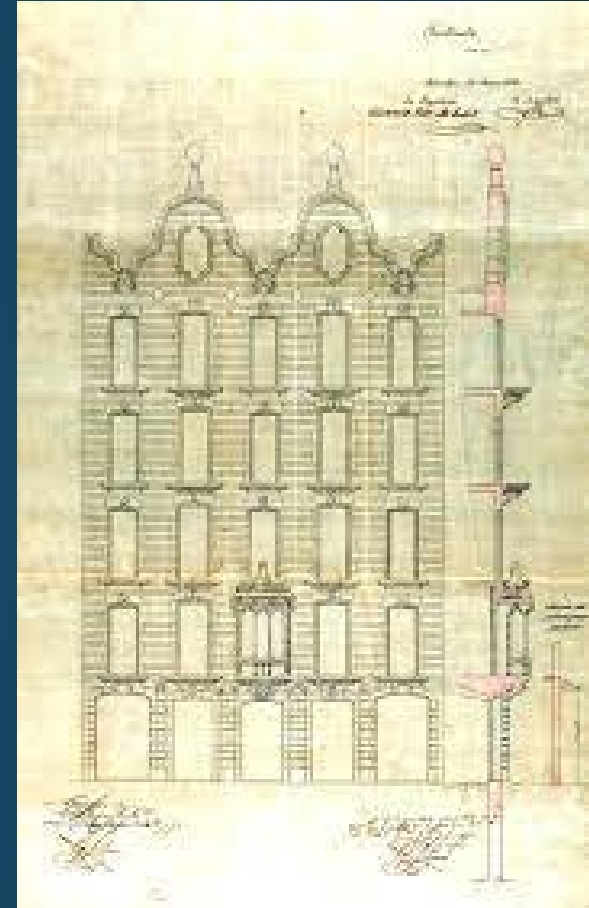




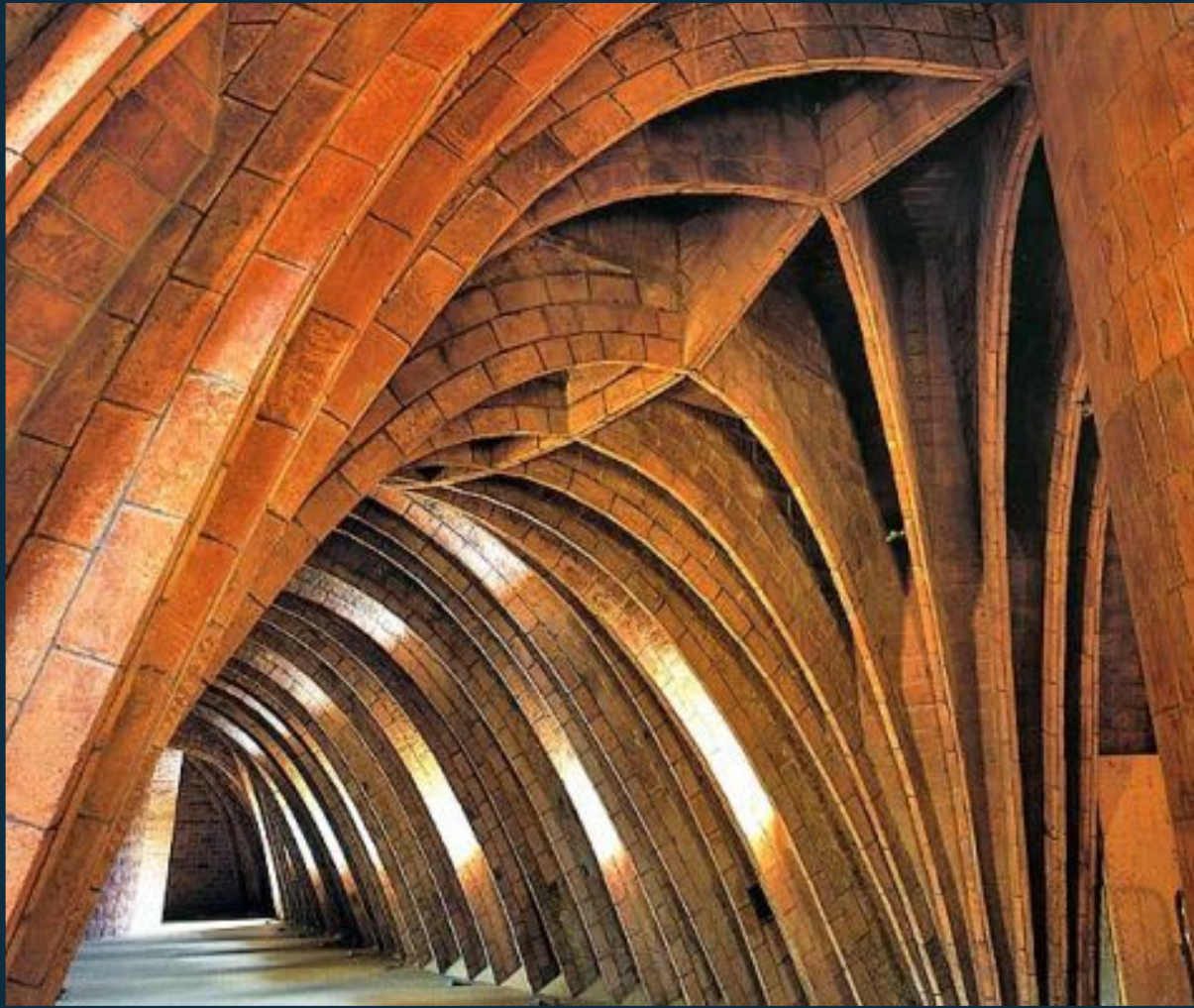


## EARLY LIFE

- His father was a coppersmith
- Developed his own style using geometric shapes and animating surfaces with patterned brick, stone, ceramic tiles and floral or reptilian metalwork
- Exhibited his work in both 1878 and 1888 World's Fair in Paris
- Experienced with other styles such as Gothic and Baroque







## MATURED ARTIST

- 1883 he was charged with a Barcelona Cathedral: Sagrada Família. Which he changed completely
- Created a type of structure known as EQUILIBRATED: No internal bracing or external buttressing
- Inclined columns, paraboloid arches, thin edge-buttet tile vaults and tile mosaics
- Organic and natural forms
- Also designed furniture

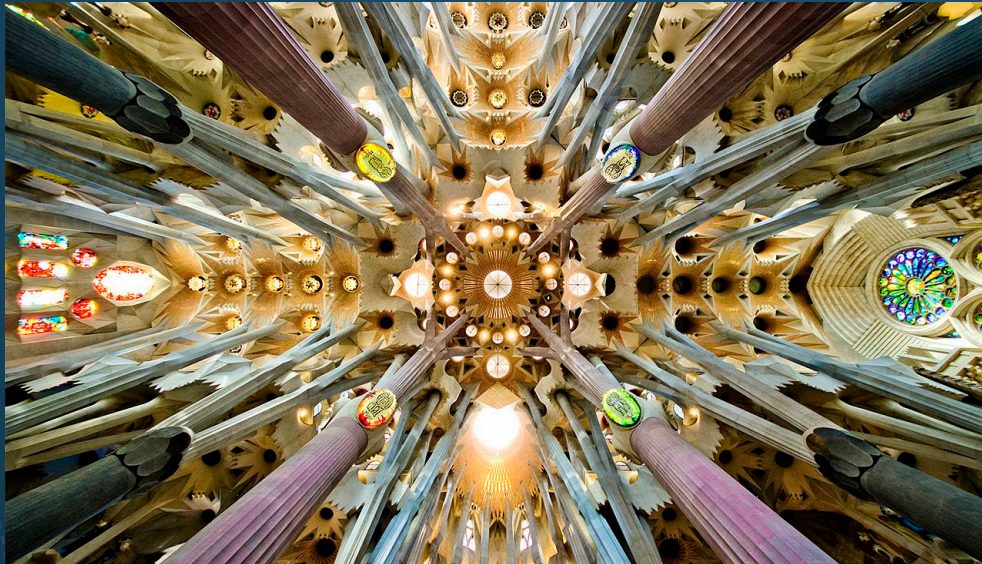
The background is a solid dark blue color. It features several faint, light blue geometric patterns. In the top-left corner, there is a large circular scale with concentric circles and radial lines, resembling a compass or a clock face, with numbers like 80, 90, 100, 110, 120, 130, 140, 150, 160, 170, 180, 190, 200, 210, 220, 230, 240, 250, 260, 270, 280, 290, 300, 310, 320, 330, 340, 350, 360. In the bottom-left corner, there is a smaller circular scale with concentric circles and radial lines, resembling a compass or a clock face, with numbers like 80, 90, 100, 110, 120, 130, 140, 150, 160, 170, 180, 190, 200, 210, 220, 230, 240, 250, 260, 270, 280, 290, 300, 310, 320, 330, 340, 350, 360. In the bottom-right corner, there is a circular scale with concentric circles and radial lines, resembling a compass or a clock face, with numbers like 80, 90, 100, 110, 120, 130, 140, 150, 160, 170, 180, 190, 200, 210, 220, 230, 240, 250, 260, 270, 280, 290, 300, 310, 320, 330, 340, 350, 360. In the top-right corner, there is a circular scale with concentric circles and radial lines, resembling a compass or a clock face, with numbers like 80, 90, 100, 110, 120, 130, 140, 150, 160, 170, 180, 190, 200, 210, 220, 230, 240, 250, 260, 270, 280, 290, 300, 310, 320, 330, 340, 350, 360. In the center, the text "BEST ARCHITECTURAL WORKS" is written in a bold, white, sans-serif font.

# BEST ARCHITECTURAL WORKS



# BASÍLICA DE LA SAGRADA FAMÍLIA

- Antoni Gaudí's masterpiece
- From 1910 on he devoted 100% to this project
- 560 ft above Barcelona's skyline
- Not yet finished





# CASA BATLLÓ

- Built between 1907 and 1912
- Represents the legend of Sant Jordi
- Organic shapes with functionality, specially in the first floors





# PARC GÜELL

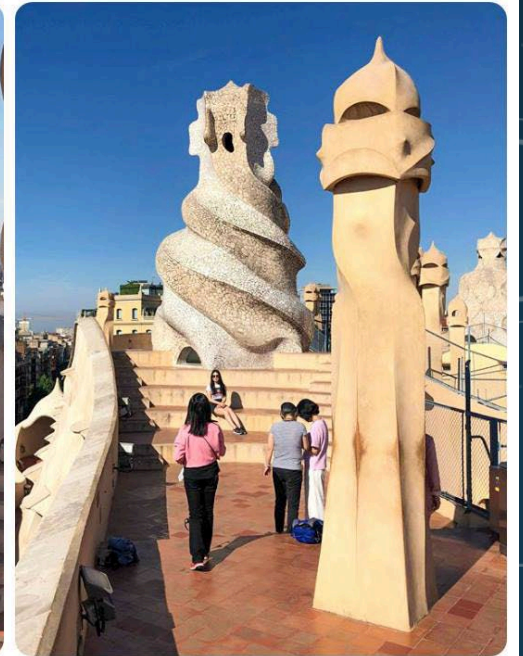
- Built between 1900 and 1914





# CASA MILÀ

- Known as "*La Pedrera*" (the Stone quarry)
- Built from 1906 to 1912





//

*NOTHING IS ART IF IT DOESN'T COME FROM NATURE*

//

Antoni Gaudí I Cornet

QUESTIONS?